

Kiat Memilih Jurnal Internasional Terindex Scopus

Deny A. Kwary, Ph.D.

www.kwary.net

Topik Pembahasan

1. Penilaian Artikel Jurnal
2. Cara Memilih Jurnal untuk Artikel Kita
3. Mengapa Artikel Kita Ditolak?

1. Penilaian Artikel Jurnal

Reviewers should:

- ▶ Assess the relevance of the work to the journal;
- ▶ Check the novelty of original articles;
- ▶ Ensure that all relevant work is cited and discussed as appropriate;
- ▶ Check that the methodology is appropriate and properly described;
- ▶ Verify whether the conclusions are supported by the results reported;
- ▶ Check that any appropriate statistical analyses have been carried out;
- ▶ Ensure that the paper is unambiguous and comprehensible, even if the English is not perfect.

Sumber: Elsevier, Editor Welcome Pack, April 2015

▶ 3

2. Cara Memilih Jurnal untuk Artikel Kita

- ▶ Lihat Daftar Pustaka di Artikel Kita
- ▶ Lihat Journal Ranking, misalnya: www.scimagojr.com
- ▶ Gunakan Website Khusus untuk Memilih Jurnal

▶ 4

Lihat Daftar Pustaka di Artikel Kita

Ke Jurnal mana sebaiknya saya memasukkan artikel saya?

- ▶ Lihat Daftar Pustaka (atau Pustaka Acuan)
- ▶ Lihat judul-judul jurnal yang dikutip.
- ▶ Pilih salah satu dari jurnal tersebut.

Mengapa?

- ▶ Artikel kita sudah berada di 'area' jurnal tersebut.
- ▶ Editor jurnal lebih menyukai naskah artikel yang mengutip artikel-artikel dari jurnal tersebut → meningkatkan *impact factor*.


▶ 5

Daftar Jurnal Scopus (www.scimagojr.com)



- Home
- Journal Rankings
- Journal Search
- Country Rankings
- Country Search
- Compare
- Map Generator
- Help
- About Us

The Shape of Science



The Shape of Science is a new graphical interface designed to access the bibliometric indicators database of the SCImago Journal & Country Rank portal (based on 2012 data).

▶ 6

Journal Rankings

Ranking Parameters

Subject Area:


Subject Category:

Region/Country: Year:

Order By:

Display journals with at least: Citable Docs. (3 years)

Complete list (2014).

 [Download data \(Excel .xlsx\)](#)

▶ 7

Journal Rankings

Ranking Parameters

Subject Area:


Subject Category:

Region/Country: Year:



Order By:

Display journals with at least: Citable Docs. (3 years)

Subject Area: **Arts and Humanities.**
 Subject Category: **Language and Linguistics.**
 Year: **2014.**

 [Download data \(Excel .xlsx\)](#)

1 - 50 of 584 << First | < Previous | Next > | Last >>

	Title	Type	SJR	H index	Total Docs. (2014)	Total Docs. (3years)	Total Refs.	Total Cites (3years)	Citable Docs. (3years)	Cites / Doc. (2years)	Ref. / Doc.	Country
1	Artificial Intelligence	j	Q1 3,263	107	66	195	3.135	818	188	4,42	47,50	
2	Journal of Cognitive Neuroscience	j	Q1 2,705	160	201	684	11.580	3.059	681	3,88	57,61	

▶ 8

Beberapa Website Khusus untuk Memilih Jurnal yang Sesuai dengan Naskah yang Kita Tulis

- ▶ SPRINGER: <http://www.springer.com/gp/authors-editors/journal-author/journal-author-helpdesk/preparation/1276>
- ▶ ELSEVIER: <http://journalfinder.elsevier.com>
- ▶ <https://www.journalguide.com/>

▶ 9

<http://www.springer.com/gp/authors-editors/journal-author/journal-author-helpdesk/preparation/1276>

Springer journal selector

[t. Top](#)

How It Works

Select the journal that suits your research best from over 2,600 Springer publications.

The Springer Journal Selector uses semantic technology to help you quickly choose the Springer journal that is right for your paper.

Enter your abstract, description of your research, or a sample text and the Springer Journal Selector provides a list of relevant journals. You can refine the results based on requirements for Impact Factor or publishing model, including an option to match to journals that are fully open access or have open access options.

Enter your abstract or article description

▶ 10

Enter your abstract or article description

study confirms that both male and female adolescents combine the western emoticons and Eastern emoticons. The data shows that female adolescents use more emoticons than male adolescents in their blogs. It means that female adolescents tend to be more expressive than male adolescents in online settings because emoticons have been interpreted as an indicator of expressiveness in the absence of paralinguistic or extralinguistic cues.

Find your target journal

- Only journals with an Impact Factor
- Only journals with Open Access options

Find your target journal

THE SPRINGER JOURNAL SELECTOR IS A FREE TOOL FROM EDANZ - EXPERT ENGLISH EDITING.

▶ 11

We recommend the following journals

SORT RESULTS BY ▼ Match Title Impact Factor Frequency Model

	Language Resources and Evaluation Impact Factor : 0.619 Frequency : Continuous Model: Hybrid
	Information Retrieval Impact Factor : 0.917 Frequency : Continuous Model: Hybrid
	Reading and Writing Impact Factor : 1.634 Frequency : Continuous Model: Hybrid
	J. Behavioral Education Impact Factor : Frequency : Continuous Model: Hybrid
	J. Psycholinguistic Research Impact Factor : 0.633 Frequency : Continuous Model: Hybrid
	Instructional Science Impact Factor : 1.426 Frequency : Continuous Model: Hybrid

▶ 12

<http://journalfinder.elsevier.com/>

ELSEVIER

[Send us feedback](#)

Find the perfect journal for your article

Elsevier® Journal Finder helps you find journals that could be best suited for publishing your scientific article. Powered by the Elsevier Fingerprint Engine™, Elsevier Journal Finder uses smart search technology and field-of-research specific vocabularies to match your article to Elsevier journals.

Simply insert your title and abstract and select the appropriate field-of-research for the best results.

Paper title

Enter your paper title here

Paper abstract

Copy and paste your paper abstract here.

▶ 13

Paper title

Enter your paper title here

Paper abstract

Copy and paste your paper abstract here.

Fields of research

Optional: refine your search by selecting up to three research fields

- | | | |
|--|--|---|
| <input type="checkbox"/> Agriculture ↗ | <input type="checkbox"/> Economics ↗ | <input type="checkbox"/> Materials Science and Engineering |
| <input type="checkbox"/> GeoSciences ↗ | <input type="checkbox"/> Humanities and Arts ↗ | <input type="checkbox"/> Life and Health Sciences ↗ |
| <input type="checkbox"/> Mathematics ↗ | <input type="checkbox"/> Physics ↗ | <input type="checkbox"/> Social Sciences ↗ |
| <input type="checkbox"/> Chemistry ↗ | | |

Filter

- Limit to journals with Open Access options

FIND JOURNAL

▶ 14

Search results (10)

Journal title **Sort by Match** ↓ Impact Factor Open Access Editorial Times Acceptance
Production Times

English for Specific Purposes

Scope and information ▼

1,659 Match Impact 5 weeks Editorial Times 19 % Acceptance 9 weeks Production Times Optional Open Access
48 Months Embargo period \$ 1800 More info ↗ Open Access Fee User License

Journal of English for Academic Purposes

Scope and information ▼

1,019 Match Impact 5 weeks Editorial Times 14 % Acceptance 10 weeks Production Times Optional Open Access
48 Months Embargo period \$ 1100 More info ↗ Open Access Fee User License

▶ 15

English for Specific Purposes

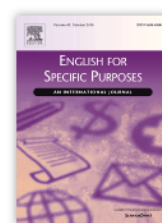
An International Research Journal

See also [Elsevier Linguistics programme home](#)

Co-Editors: C.B. Feak, N. Harwood

[View full editorial board](#)

Supports Open Access



ISSN: 0889-4906



Guide for Authors ▼

Submit Your Paper ▼

Track Your Paper ▼

English For Specific Purposes is an international peer-reviewed journal that welcomes [submissions](#) ↗ from across the world. Authors are encouraged to submit articles and research/discussion notes on topics relevant to the **teaching and learning**

▶ 16

<https://www.journalguide.com>

The screenshot shows the JournalGuide website interface. At the top, the logo 'JournalGuide^{BETA} by Research Square' is on the left, and navigation links 'Search', 'My Searches', 'My Journals', 'FAQ', 'Log In', and a green 'Sign Up' button are on the right. The main heading reads 'Find the best journal for your research.' Below this is a search section with a 'Search journals by:' dropdown menu. The 'Paper Match' option is selected. There are three input fields: 'Manuscript title (or top keywords)' with the placeholder 'Manuscript title', 'Manuscript abstract (or supporting keywords)' with the placeholder 'Manuscript abstract', and 'Scramble abstract'. A red 'SEARCH' button is positioned to the right of the input fields.

▶ 17

This screenshot shows the same search interface as above, but with example text entered into the input fields. The 'Manuscript title' field contains 'academic words', the 'Manuscript abstract' field contains 'word list, vocabulary, academic English', and the 'Scramble abstract' field is empty. The 'SEARCH' button remains visible.

▶ 18

JournalGuide BETA by Research Square

Search My Searches My Journals FAQ Log in Sign Up

Search journals by: Paper Match Journal Name Publisher Category

Manuscript title (or top keywords) Manuscript abstract (or supporting keywords) Scramble abstract

academic words word list, vocabulary, academic English **SEARCH**

Advanced filters

Match articles from the past 10 years Impact greater than 0

Has open access options Verified Include journals without a SNIP

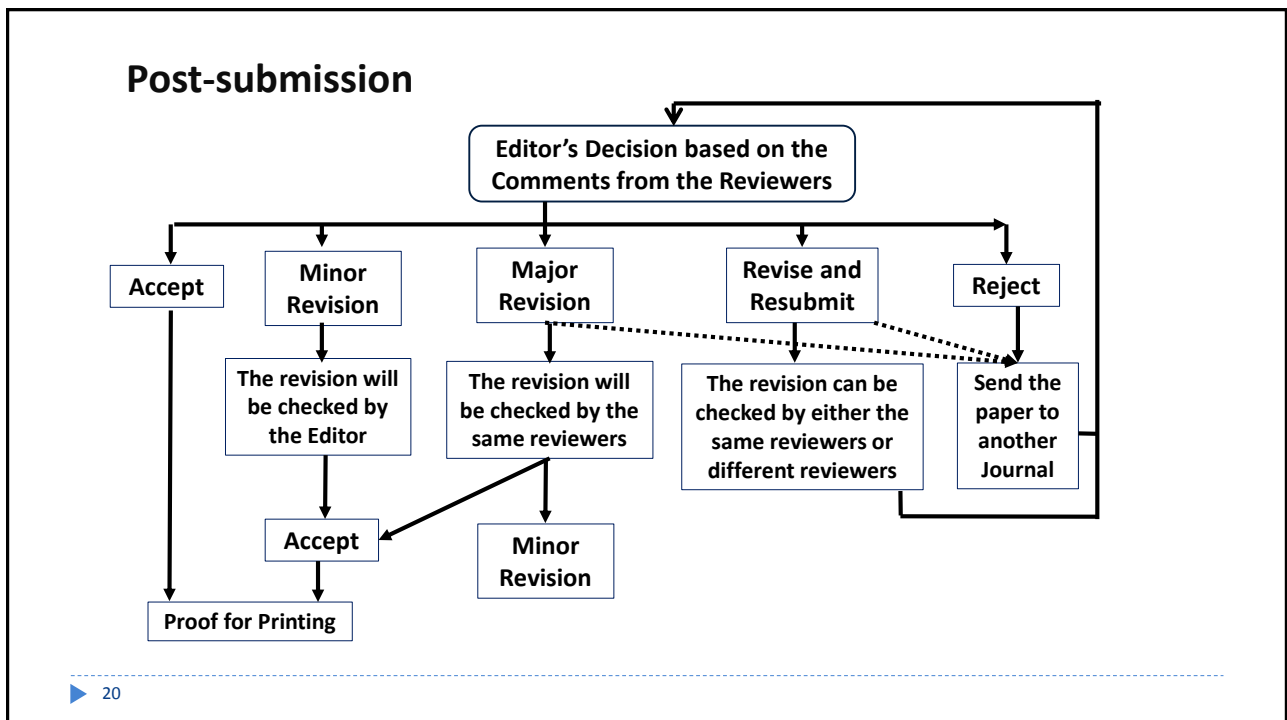
62 journals matched your search. [Print this page](#) [Save these results](#)

Show 10 entries

Previous 1 2 3 4 5 6 7 Next

Compare	Score	Journal name	Matches	Publisher	Impact	Speed	Open access	Follow
<input type="checkbox"/>	1	Journal of Child Language	5	Cambridge University Press	1.329	Unknown	No	Follow
<input type="checkbox"/>	0.842	Developmental Science	4	Wiley	2.008	Unknown	Yes	Follow
<input type="checkbox"/>	0.77	Cognition	4	Walter de Gruyter	1.976	Unknown	Yes	Follow

▶ 19



3. Mengapa Artikel Kita Ditolak?

Professor David Phillips (University of Oxford), former Editor of the *Oxford Review of Education*, has offered the following explanations:

- ▶ The article is not ready; it is only a draft.
- ▶ The article is too parochial (it will not appeal to a wider, international audience).
- ▶ The article is written in poor English.
- ▶ The manuscript is poorly prepared.
- ▶ The article is too short or too long (check the article length specified in author guidelines).
- ▶ The article has been submitted to the wrong journal (the material will not be relevant to the readers - check the aims and scope of a journal before submitting to it).
- ▶ Nothing new is stated or found.
- ▶ The article is under-theorized.
- ▶ It is not properly a journal article and would be better suited to another form of publication.

Thank You

Deny A. Kwary, Ph.D.

kwary@yahoo.com

www.kwary.net